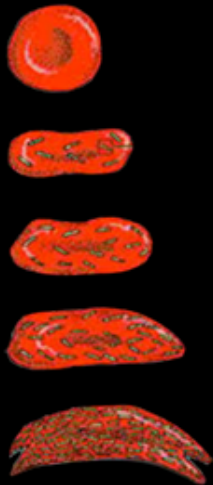


Cayenne Wellness Center and Children's Foundation and The Sickle Cell Disease Foundation of California presents

8 th annual



2016 Sickle Cell Disease Educational Seminar: the culture and politics of pain



Pathophysiology, and Historical Perspectives of Sickle Cell Disease

Friday, September 9, 2016 • 8:45 am - 11:00 am

Speakers are:

Susan Claster, MD and Cage Johnson, MD
Trish Peterson, RN and Pat Corley, RN



Complications of Sickle Cell Disease

Saturday, September 10, 2016 • 8:45 am - 11:00 am

Speakers are:

Coretta Jenerrette, PhD - Psychosocial Issues
Ward Hagar, MD - Acute Chest Syndrome
Kazu Suzuki, MD - Leg Ulcers
Lonnie Zeltzer, MD - Pain

Program at a Glance

The 2016 program is here. Take a look! You don't want to miss these phenomenal and renown speakers.

Online Registration is now Open



Registration for this years Educational Seminar is now Open.

DONATE

Invest in the lives of persons currently living with sickle cell disease. Make a tax-deductible donation today. Your donation will help to provide education and support services for persons living with sickle cell disease in California.

STAY CONNECTED



Keynote Speakers

Stephanie Mulkey Memorial Lectures



Duana Fullwiley, PhD
Stanford University
Department of Anthropology

"The Politics & Culture of Pain"
11:15am - 12:45pm
Friday, September 9, 2016



Debra Walker King, PhD
University of Florida
Department of English

"The Politics & Culture of Pain"
11:15am - 12:45pm
Saturday, September 10, 2016

Cayenne Wellness Center and Children's Foundation
PO Box 3856 • Glendale, CA 91221
818-940-0079 tele • 818-840-9485 fax
info@cayennewellness.org • www.cayennewellness.org